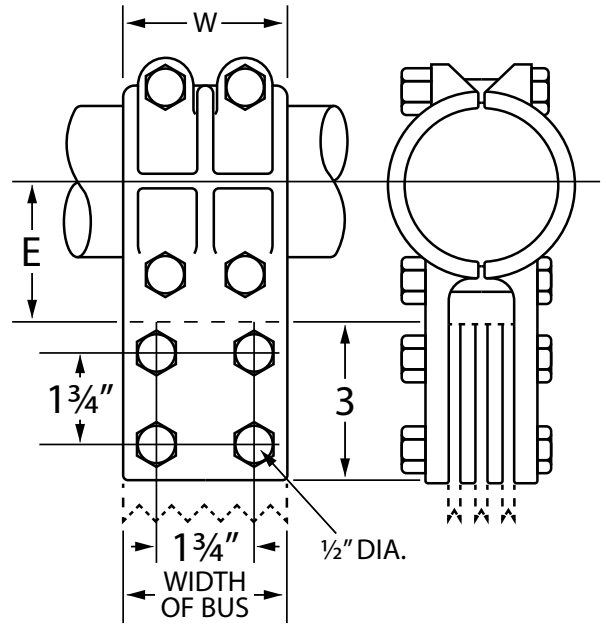
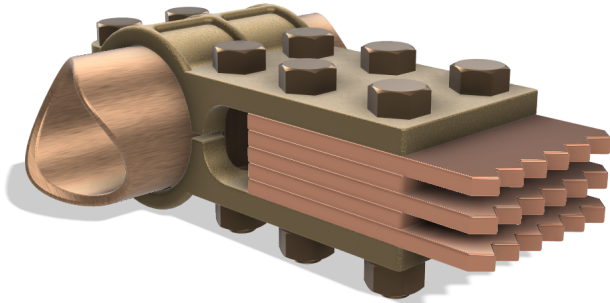


# T-Connectors

## FTB Tubing Run - Bar Tap



FTB connectors are designed for joining flat bars to a tubular bus run. Cast in interchangeable halves, the connectors are easily placed on the bus after the bus is in position. Fittings are listed for use with 4 inch thick flat bars. If bars of other thicknesses are to be used, specify on order.

I.P.S. TUBE	NUMBER OF BARS	WIDTH OF BARS	CATALOG NUMBER	DIMENSIONS IN INCHES		BOLT DIAMETER	
				E	W	RUN	TAP
2	1	3	FTB-130	2 1/2	3	1/2	1/2
2	1	4	FTB-131	2 1/2	3	1/2	1/2
2	2	2	FTB-132	2 1/2	3	1/2	1/2
2	2	3	FTB-133	2 1/2	3	1/2	1/2
2	3	4	FTB-134	2 7/16	3 1/4	1/2	1/2
2 1/2	1	3	FTB-140	2 3/4	3	1/2	1/2
2 1/2	1	4	FTB-141	2 3/4	4	1/2	1/2
2 1/2	2	3	FTB-142	2 3/4	3	1/2	1/2
2 1/2	2	4	FTB-143	2 3/4	4	1/2	1/2
2 1/2	3	3	FTB-144	2 3/4	3	1/2	1/2
2 1/2	3	4	FTB-145	2 3/4	4	1/2	1/2
3	1	3	FTB-150	3 1/4	3	1/2	1/2
3	1	4	FTB-151	3 1/4	4	1/2	1/2
3	2	3	FTB-152	3 1/4	3	5/8	1/2
3	2	4	FTB-153	3 1/4	4	5/8	1/2
3	3	3	FTB-154	3 1/4	3	5/8	1/2
3	3	4	FTB-155	3 1/4	4	5/8	1/2
3	4	4	FTB-156	3 1/4	4	5/8	1/2
3 1/2	1	4	FTB-160	3 1/2	4	5/8	1/2
3 1/2	2	3	FTB-161	3 1/2	3	5/8	1/2
3 1/2	2	4	FTB-162	3 1/2	4	5/8	1/2

(continued)

For cross reference or other information, please contact us.  
[deltastarcc.com](http://deltastarcc.com)



**DELTA STAR  
CONNECTOR COMPANY**



# T-Connectors

## FTB Tubing Run - Bar Tap

(continued)

I.P.S. TUBE	NUMBER OF BARS	WIDTH OF BARS	CATALOG NUMBER	DIMENSIONS IN INCHES		BOLT DIAMETER	
				E	W	RUN	TAP
3 1/2	3	3	FTB-163	3 1/2	3	5/8	1/2
3 1/2	3	4	FTB-164	3 1/2	4	5/8	1/2
3 1/2	4	3	FTB-165	3 1/2	3	5/8	1/2
3 1/2	4	4	FTB-166	3 1/2	4	5/8	1/2
4	2	3	FTB-170	3 3/4	3	5/8	1/2
4	2	4	FTB-171	3 3/4	4	5/8	1/2
4	3	3	FTB-172	3 3/4	3	5/8	1/2
4	3	4	FTB-173	3 3/4	4	5/8	1/2
4	4	3	FTB-174	3 3/4	3	5/8	1/2
4	4	4	FTB-175	3 3/4	4	5/8	1/2

For cross reference or other information, please contact us.  
[deltastarcc.com](http://deltastarcc.com)



**DELTA STAR  
CONNECTOR COMPANY**

